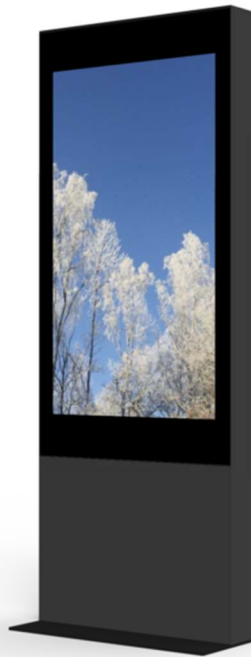


INSTALLATION MANUAL



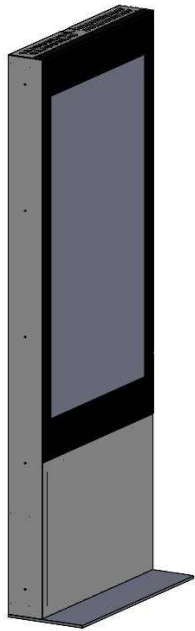
Part no: ST5500-5401

SE Installationsmanual

GB Installation manual

MANUFACTURER

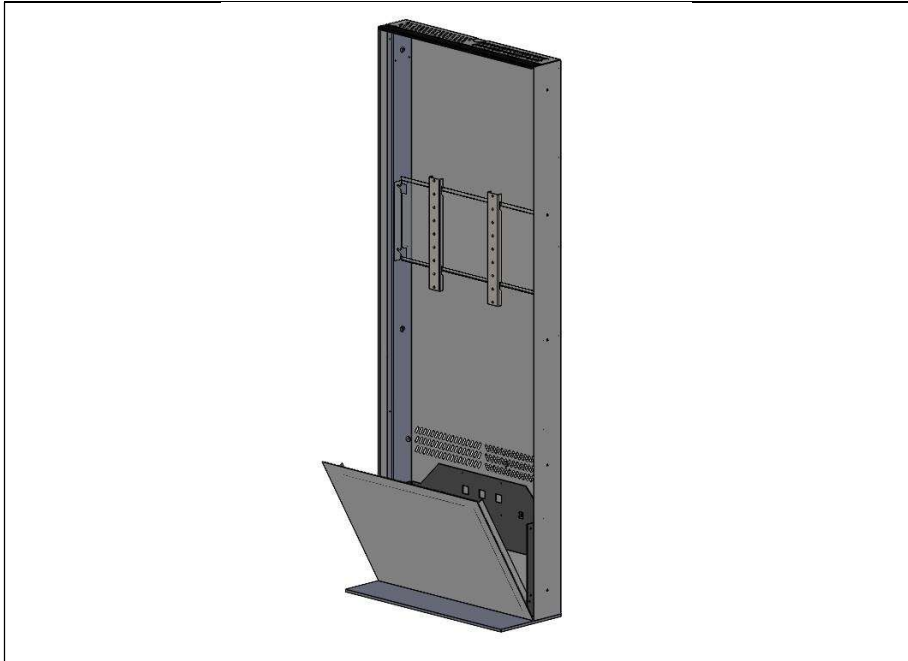
HI-ND Sweden AB
Mekanikervägen 9A, 145 63 Tullinge
Email: info@hi-nd.se



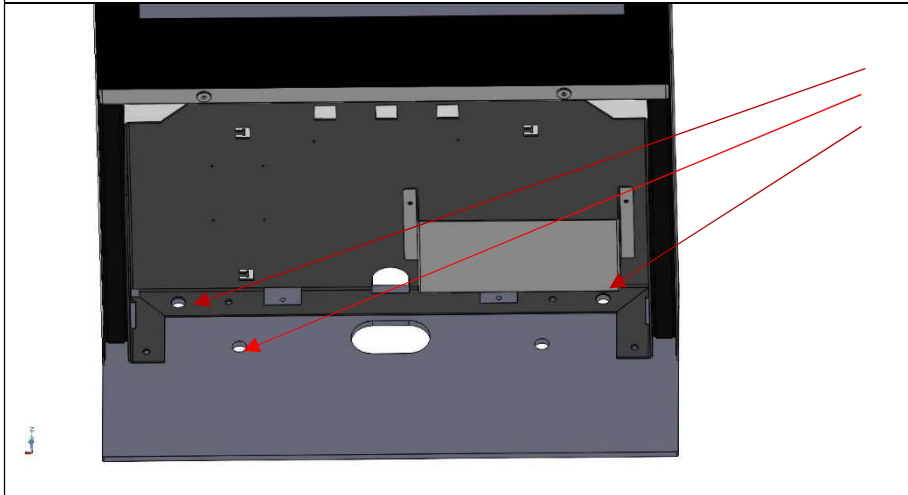
1. Remove the sides by lifting them straight up



2. The bottom door can now be opened. Use a screwdriver to remove the screw

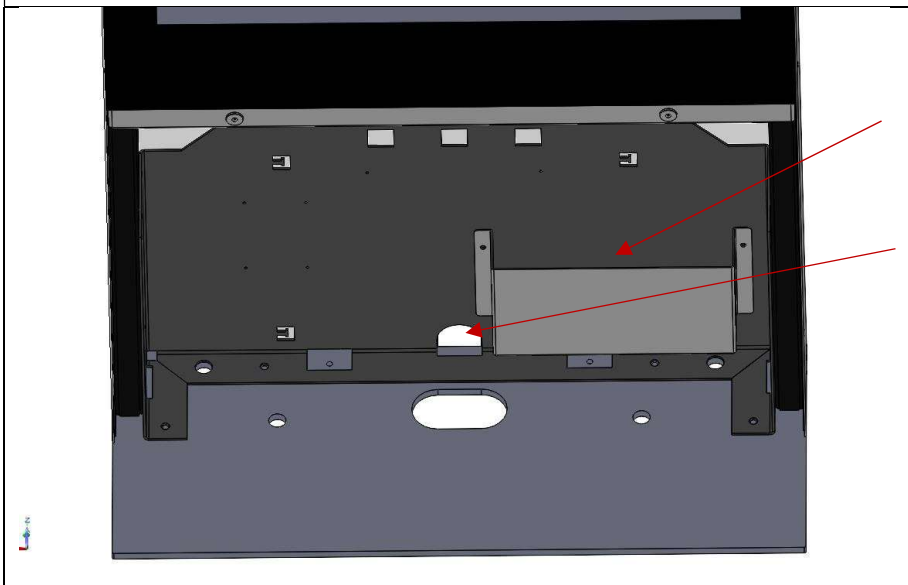


3.The bottom door can now be opened. Remove the glass by lifting it straight up. Two persons needed



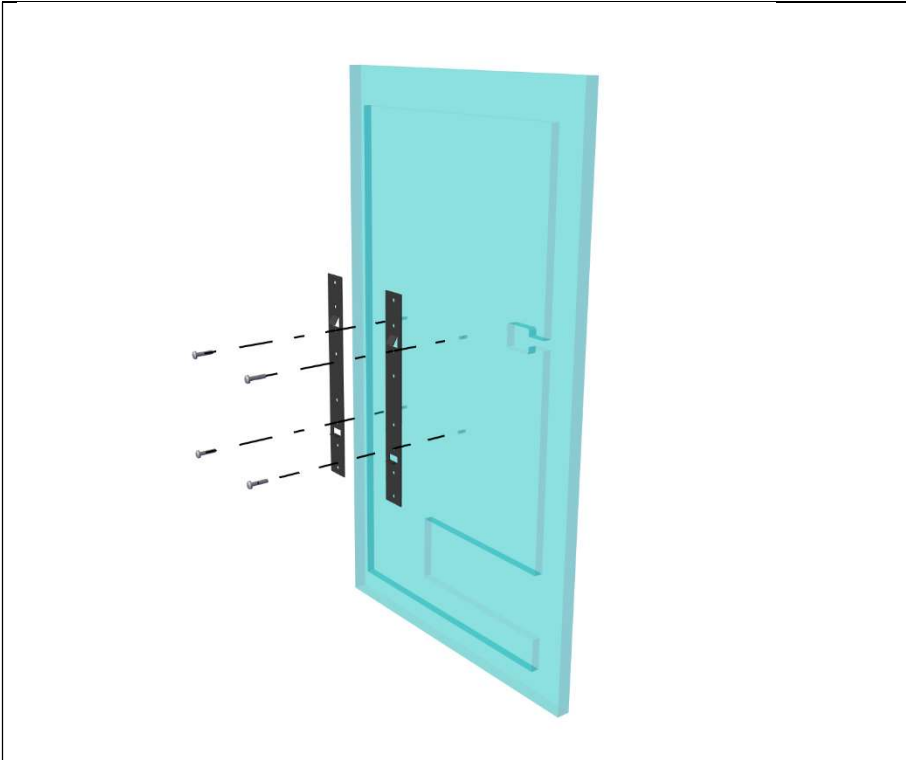
4.Use 10mm expander bolts for the floor.

Properties and floor are specific for each case. The totem can be glued to the floor if the backside is close to a wall. 4cm between the backside and wall is necessary for ventilation

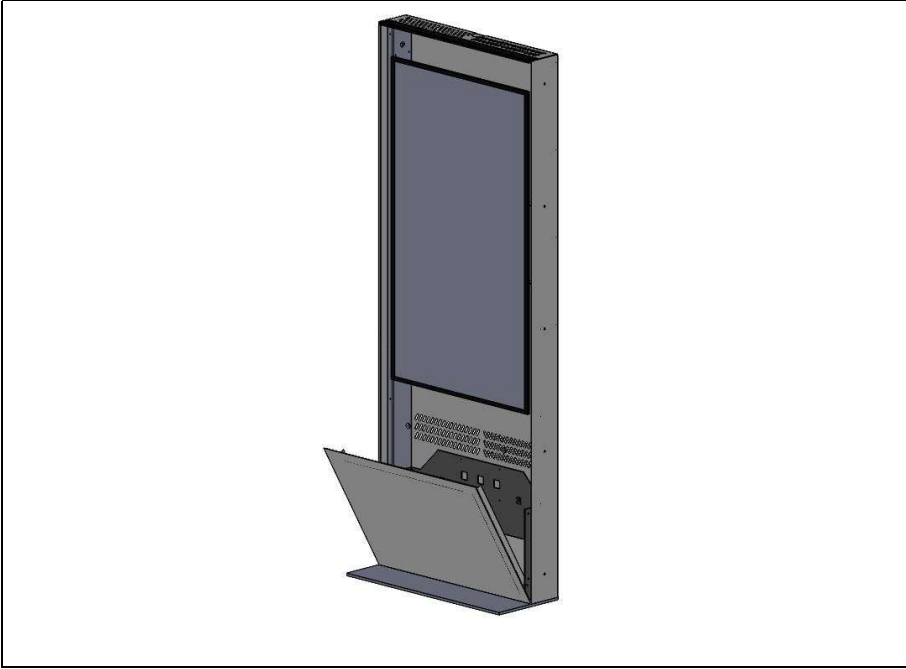


5.External computer can be placed here

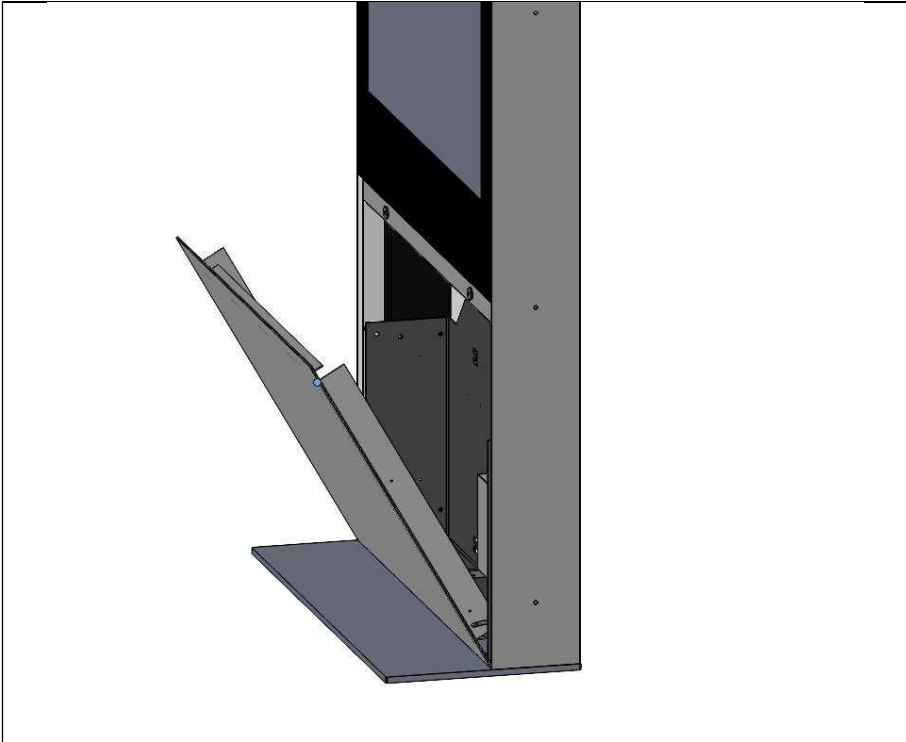
Opening for powercable



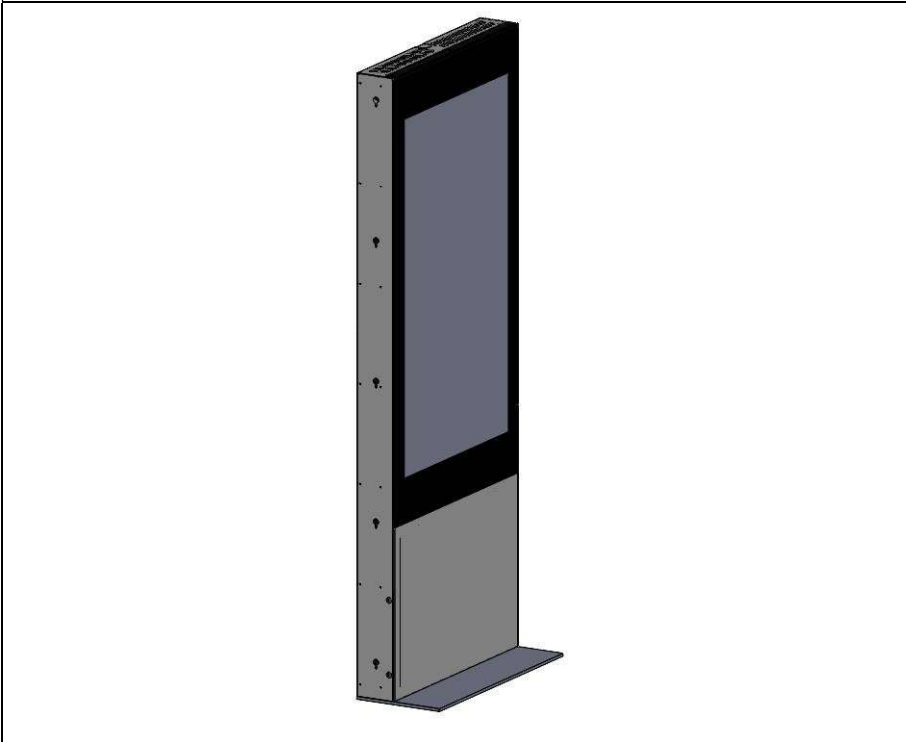
6. Connect VESA brackets to the backside of the display



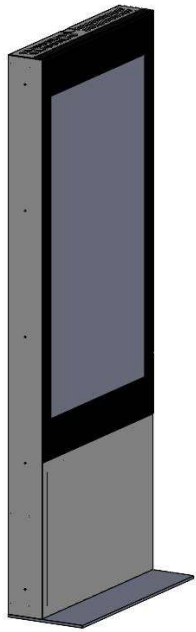
7. Attach the display



8. Close the bottom door



9. Attach side covers to the key holes



10.Side covers connected



11.Finished
(Image with powder coating in black)



12. Finished
(Image in with powder
coating in grey)



13. Finished
(Image in with powder
coating in black and
wood decor)